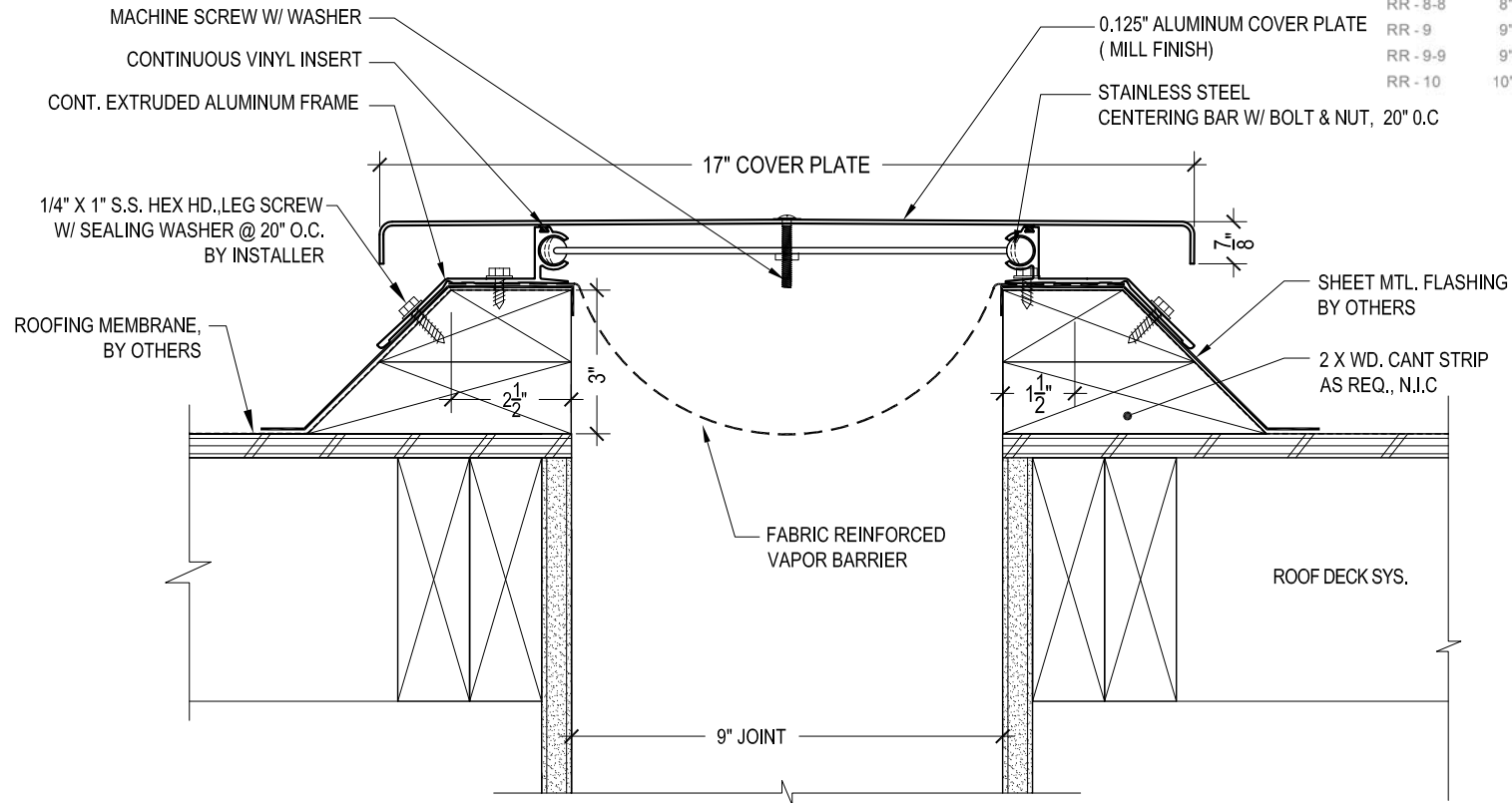


MODEL	A - VOID	MAX. OPENING	B - COVER
RR - 2	2" (50.80)	4" (101.60)	10" (254.00)
RR - 3	3" (76.20)	4 1/2" (114.30)	11" (279.40)
RR - 3-3	3" (76.20)	6" (152.40)	11" (279.40)
RR - 4	4" (101.60)	6" (152.40)	12" (304.60)
RR - 4-4	4" (101.60)	8" (203.20)	12" (304.60)
RR - 5	5" (127.00)	7 1/2" (190.50)	13" (330.20)
RR - 5-5	5" (127.00)	10" (254.00)	13" (330.20)
RR - 6	6" (152.40)	9" (228.60)	14" (355.60)
RR - 6-6	6" (152.40)	12" (304.80)	14" (355.60)
RR - 7	7" (177.80)	10 1/2" (266.70)	15" (381.00)
RR - 7-7	7" (177.80)	14" (355.60)	16" (406.40)
RR - 8	8" (203.20)	12" (304.80)	16" (406.40)
RR - 8-8	8" (203.20)	16" (406.40)	18" (457.20)
RR - 9	9" (228.60)	13 1/2" (342.90)	17" (431.60)
RR - 9-9	9" (228.60)	18" (457.20)	20" (508.00)
RR - 10	10" (254.00)	15" (381.00)	18" (457.20)



M.H. POWELL & CO., INC.

ARCHITECTURAL SEISMIC EXPANSION JOINT SYSTEMS

2313 YATES AVENUE | PHONE : (323) 887-0037
 COMMERCE, CA 90040 | FAX : (323) 887-0877
 | WEB : www.mhpowell.net

MODEL RR-9

ROOF TO ROOF

SCALE: 3" = 1'-0"

PROJECT : _____ PROJECT # : _____

LOCATION : _____ DATE : _____

ARCHITECT : _____

CUSTOMER : _____

PAGE #