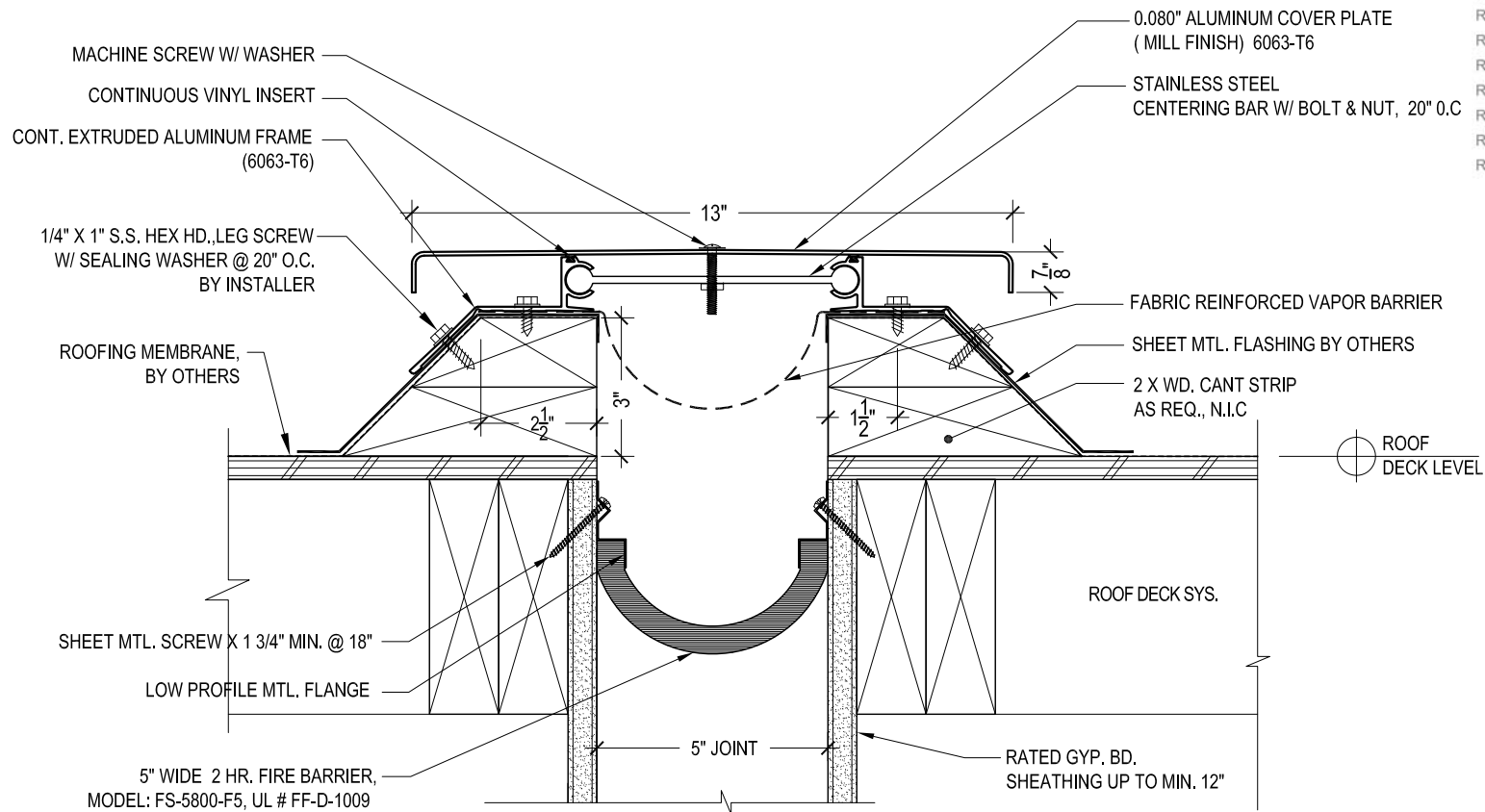


| MODEL | A - VOID | MAX. OPENING | B - COVER |
|----------|--------------|------------------|--------------|
| RR - 2 | 2" (50.80) | 4" (101.60) | 10" (254.00) |
| RR - 3 | 3" (76.20) | 4 1/2" (114.30) | 11" (279.40) |
| RR - 3-3 | 3" (76.20) | 6" (152.40) | 11" (279.40) |
| RR - 4 | 4" (101.60) | 6" (152.40) | 12" (304.60) |
| RR - 4-4 | 4" (101.60) | 8" (203.20) | 12" (304.60) |
| RR - 5 | 5" (127.00) | 7 1/2" (190.50) | 13" (330.20) |
| RR - 5-5 | 5" (127.00) | 10" (254.00) | 13" (330.20) |
| RR - 6 | 6" (152.40) | 9" (228.60) | 14" (355.60) |
| RR - 6-6 | 6" (152.40) | 12" (304.80) | 14" (355.60) |
| RR - 7 | 7" (177.80) | 10 1/2" (266.70) | 15" (381.00) |
| RR - 7-7 | 7" (177.80) | 14" (355.60) | 16" (406.40) |
| RR - 8 | 8" (203.20) | 12" (304.80) | 16" (406.40) |
| RR - 8-8 | 8" (203.20) | 16" (406.40) | 18" (457.20) |
| RR - 9 | 9" (228.60) | 13 1/2" (342.90) | 17" (431.60) |
| RR - 9-9 | 9" (228.60) | 18" (457.20) | 20" (508.00) |
| RR - 10 | 10" (254.00) | 15" (381.00) | 18" (457.20) |



M.H. POWELL & CO., INC.

ARCHITECTURAL SEISMIC EXPANSION JOINT SYSTEMS

2313 YATES AVENUE | PHONE : (323) 887-0037
 COMMERCE, CA 90040 | FAX : (323) 887-0877
 | WEB : www.mhpowell.net

MODEL RR-5

ROOF TO WALL

SCALE: 3" = 1'-0"

PROJECT : _____ PROJECT # : _____
 LOCATION : _____ DATE : _____
 ARCHITECT : _____
 CUSTOMER : _____

PAGE #